

**MANASQUAN PUBLIC SCHOOLS  
ENROLLMENT REPORT  
2014 - 2015 School Year**

**DOCUMENT A**

**ELEMENTARY SCHOOL**

		Comparative Figures - ES			
Grade					
Kdg	52	(4 sections)	September	2000	695
1st	73	(4 sections)	September	2001	695
2nd	59	(3 sections)	September	2002	691
3rd	73	(4 sections)	September	2003	691
4th	61	(3 sections)	September	2004	681
5th	80	(4 sections)	September	2005	703
6th	83	(4 sections)	September	2006	688
7th	69	(4 sections)	September	2007	684
8th	66	(4 sections)	September	2008	696
Pre-Schl.	10	(1 section)	September	2009	709
LLD	0		September	2010	684
MD	3		September	2011	677
PPD	2		September	2012	663
School PD	1		September	2013	649
<b>Total</b>	<b>632</b>		<b>September</b>	<b>2014</b>	<b>619</b>

	Grade 9	Grade 10	Grade 11	Grade 12	Totals
Avon	5	9	7	4	25
Belmar	26	29	25	22	102
Brielle	57	67	46	69	239
Lake Como	7	12	6	10	35
Manasquan	86	72	79	61	298
Sea Girt	11	12	12	9	44
Spring Lake	17	16	13	12	58
Spring Lake Heights	28	34	28	39	129
Employee Child	0	0	1	0	1
Parent Paid	0	0	0	1	1
PTC 20 (LLD)	4	5	5	1	15
PTC 22 (ED)	0	0	0	0	0
PTC 23 (MD)	0	0	0	0	0
<b>Sub-totals</b>	<b>241</b>	<b>256</b>	<b>222</b>	<b>228</b>	<b>947</b>

Shared-time:

Avon	0	0	0	0	0
Belmar	3	1	5	4	13
Brielle	2	1	2	3	8
Lake Como	0	2	0	4	6
Manasquan	1	3	3	0	7
Sea Girt	0	0	0	0	0
Spring Lake	0	0	1	0	1
Spring Lake Heights	0	2	3	0	5
LLD/Voc shared time	3	2	0	2	7
<b>Sub-totals</b>	<b>9</b>	<b>11</b>	<b>14</b>	<b>13</b>	<b>47</b>
<b>High School Totals</b>	<b>250</b>	<b>267</b>	<b>236</b>	<b>241</b>	<b>994</b>

Comparative Figures - HS

September	2000	913
September	2001	971
September	2002	1059
September	2003	1078
September	2004	1063
September	2005	1047
September	2006	1052
September	2006	1052
September	2007	1025
September	2008	1028
September	2009	1016
September	2010	1028
September	2011	1021
September	2012	963
September	2013	1003
<b>September</b>	<b>2014</b>	<b>1007</b>

**MANASQUAN SCHOOL DISTRICT ATTENDANCE COMPARISON REPORT**  
**2014 - 2015 School Year**

<b>HIGH SCHOOL</b>	<b>ATTENDANCE PERCENTAGE</b>	<b>AVERAGE DAILY ENROLLMENT</b>	<b>AVERAGE DAILY ATTENDANCE</b>	
Apr-14	94.45	977.5	934.41	
<b>Apr-15</b>	<b>96.03</b>	<b>981.93</b>	<b>942.94</b>	
<b>ELEMENTARY SCHOOL</b>				
Apr-14	95.235	661.125	630.813	
<b>Apr-15</b>	<b>94.192</b>	<b>624.125</b>	<b>588.5</b>	

**MANASQUAN SCHOOL DISTRICT FIRE DRILL REPORT**  
**2014 - 2015 School Year**

**HIGH SCHOOL**

<b>DATE OF DRILL</b>	<b>TIME OF DRILL</b>	<b>LENGTH OF DRILL</b>	<b>COMMENTS</b>	<b>SECURITY DRILLS</b>
April 16	1:34 P.M.	6 minutes		Fire Drill
<b>ELEMENTARY SCHOOL</b>				
<b>DATE OF DRILL</b>	<b>TIME OF DRILL</b>	<b>LENGTH OF DRILL</b>	<b>COMMENTS</b>	<b>SECURITY DRILL</b>
April 17	8:05 A.M.	20 minutes		Table Top Security
April 29	1:15 P.M.	5 minutes		Fire Drill

# MANASQUAN SCHOOL DISTRICT HARRASSMENT, INTIMIDATION & BULLYING REPORT

	0	1	2	3	4	5	6	7	8	9	10	11	12	13	14	15	16	17	18	19	20	21	22	23	24	25	26	27	28	29	30	31	32	33	34	35	36	37	38	39	40	41	42	43	44	45	46	47	48	49	50	51	52	53	54	55	56	57	58	59	60	61	62	63	64	65	66	67	68	69	70	71	72	73	74	75	76	77	78	79	80	81	82	83	84	85	86	87	88	89	90	91	92	93	94	95	96	97	98	99	
0	0	1	4	9	16	25	36	49	64	81	100	121	144	169	196	225	256	289	324	361	400	441	484	529	576	625	676	729	784	841	900	961	1024	1089	1156	1225	1296	1369	1444	1521	1600	1681	1764	1849	1936	2025	2116	2209	2304	2401	2500	2601	2704	2809	2916	3025	3136	3249	3364	3481	3600	3721	3844	3969	4096	4225	4356	4489	4624	4761	4900	5041	5184	5329	5476	5625	5776	5929	6084	6241	6400	6561	6724	6889	7056	7225	7396	7569	7744	7921	8100	8281	8464	8649	8836	9025	9216	9409	9604	9801	10000

[illegible]

	All victims received counseling.
--	----------------------------------

**MANASQUAN PUBLIC SCHOOL DISTRICT**  
**PROPOSED SEPTEMBER 29, 2015 BOND REFERENDUM PROGRAM**  
**MAY 19, 2015 PRESENTATION**



**GA**  
**GARRISON ARCHITECTS**

713 Creek Road  
Bellmawr, NJ 08031  
Telephone (856) 396-6200  
Facsimile (856) 396-6205  
Please visit us on the web at [www.garrisonarch.com](http://www.garrisonarch.com)

**EDWARDS**

**Engineering Group, Inc**

69 West End Avenue  
PO Box 8437  
Somerville, NJ 08876  
Tel 908-231-9595  
Fax 908-231-9696



**MANASQUAN PUBLIC SCHOOL DISTRICT**

**AGENDA**

1. NJDOE School Facilities Funding
2. Elementary School Renovations
3. High School Renovations
4. Cost Estimate
5. Referendum Schedule
6. November 2016 Referendum Projects

GARRISON **GA** ARCHITECTS

**EDWARDS**  
Engineering Group, Inc



## MANASQUAN PUBLIC SCHOOL DISTRICT

### Educational Facilities Construction and Financing Act

On July 18, 2000 the Educational Facilities Construction and Financing Act, S-200 was made into law, thereby initialing the largest, most comprehensive school construction program in the nation. Senators William Gromley (R-Atlantic) and John Lynch (D-Middlesex), Assembly Speaker Jack Collins (R-Salem) and Assemblyman Joseph Malone, III (R-Burlington), sponsored the bill.

#### Conclusion

Debt service aid under EFCFA has some advantages not readily identified when the law was originally enacted in July 2000, because of the overwhelming popularity of the grant program when it was first introduced.

- The most significant advantage is that a school district will receive approximately the same amount of state aid under EFCFA's debt service aid and grant programs.
- Another advantage of debt service aid is the ability of school districts to receive aid for the issuance of its temporary notes, which is not available under EFCFA's grant program.
- If school officials are attempting to avoid the onerous reimbursement grant program of the SDA, which often leads to an unanticipated school district borrowing, the selection of debt service aid accomplishes this goal.

GARRISON <sup>GA</sup> ARCHITECTS

**EDWARDS**  
Engineering Group, Inc

3  
1-27-15



## MANASQUAN PUBLIC SCHOOL DISTRICT

### ELEMENTARY SCHOOL

Site	Qty	Unit Cost	Cost Estimate
Elementary School Field Renovation			\$633,653
New Main Security Entrance HC Ramp with Landscaping			\$100,000
Install Light Poles			\$10,500 *
Resurface Existing Parking Lot			\$250,000
New Playground for Grades 5 - 8			\$200,000 *
		<b>Subtotal</b>	<b>\$1,094,163</b>
		<b>25% Soft Costs (A/E Fees, Contingency, CM, Legal, etc.)</b>	<b>\$273,538</b>
		<b>Estimated Total</b>	<b>\$1,367,691</b>
<b>Exterior Renovations</b>			
Exterior Window Replacement (First Half in oldest portion of the facility)			\$175,000
Exterior Window Replacement (Second Half in oldest portion of the facility)			\$175,000
Brick Pointing/Control Joints			\$7,500
Door Access and Monitoring on All Exterior Doors			\$85,000
		<b>Subtotal</b>	<b>\$442,500</b>
		<b>25% Soft Costs (A/E Fees, Contingency, CM, Legal, etc.)</b>	<b>\$110,625</b>
		<b>Estimated Total</b>	<b>\$553,125</b>

\* Site Scope of Work Items NOT Eligible for State Aid

GARRISON <sup>GA</sup> ARCHITECTS

**EDWARDS**  
Engineering Group, Inc

4  
3-18-15



# MANASQUAN PUBLIC SCHOOL DISTRICT

## ELEMENTARY SCHOOL

<u>Interior Renovations</u>	Qty	Unit Cost	Cost Estimate
Renovate Lobby and Main Office to Provide Secure Entry for Visitors			\$325,000
Gym Divider Curtain			\$35,000
Media Center Renovation - Furniture, Finishes, etc.	3,375 SF @	\$150	\$506,250
		<b>Subtotal</b>	<b>\$866,250</b>
		25% Soft Costs (A/E Fees, Contingency, CM, Legal, etc.)	<b>\$216,563</b>
		<b>Estimated Total</b>	<b>\$1,082,813</b>
<u>Building Systems</u>			
HVAC Construction			
Replace Temperature Controls with New Automatic Temperature Controls Trane Tracer System			\$500,000
		<b>Subtotal</b>	<b>\$500,000</b>
		25% Soft Costs (A/E Fees, Contingency, CM, Legal, etc.)	<b>\$125,000</b>
		<b>Estimated Total</b>	<b>\$625,000</b>
Electrical Construction			
Replace Existing Fire Alarm System with Addressable Fire Alarm System	106,000 SF @	\$6.00	\$636,000
Replace Existing Gym Lighting with LED Lights			\$75,000
Security System Upgrades and Expansion, Cameras, Access Control			\$75,000
VoIP Phone System Includes New POE Ports	106,000 SF @	\$1.00	\$106,000
		<b>Subtotal</b>	<b>\$892,000</b>
		25% Soft Costs (A/E Fees, Contingency, CM, Legal, etc.)	<b>\$223,000</b>
		<b>Estimated Total</b>	<b>\$1,115,000</b>

GARRISON <sup>GA</sup> ARCHITECTS

**EDWARDS**  
Engineering Group, Inc

5  
2-18-15



# MANASQUAN PUBLIC SCHOOL DISTRICT

## ELEMENTARY SCHOOL

MANASQUAN ELEMENTARY	Total Estimated Cost	Estimated State Share	Local Share
Site Work	\$1,367,691	(\$441,826)*	\$925,865
Exterior Renovations	\$553,125	(\$221,250)	\$331,875
Interior Renovations	\$1,082,813	(\$433,125)	\$649,688
HVAC Construction	\$625,000	(\$250,000)	\$375,000
Electrical Construction	\$1,115,000	(\$446,000)	\$669,000
<b>TOTAL</b>	<b>\$4,743,629</b>	<b>(\$1,792,201)</b>	<b>\$2,951,428</b>
		38%	62%

State Aid – Renovations – Architects' Estimate @ 40%

\* Part of Site Scope of Work is NOT Eligible for State Aid

GARRISON <sup>GA</sup> ARCHITECTS

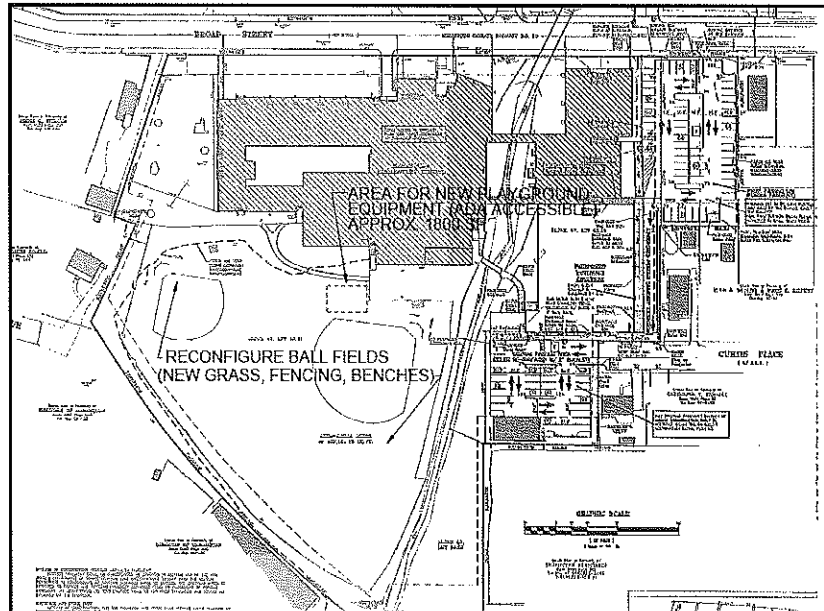
**EDWARDS**  
Engineering Group, Inc

6  
3-18-15



## MANASQUAN PUBLIC SCHOOL DISTRICT

### ELEMENTARY SCHOOL



GARRISON *GA* ARCHITECTS

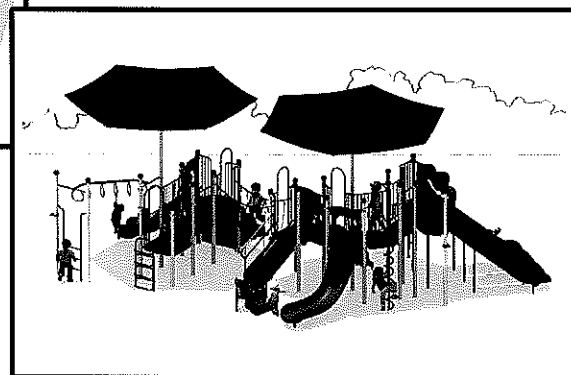
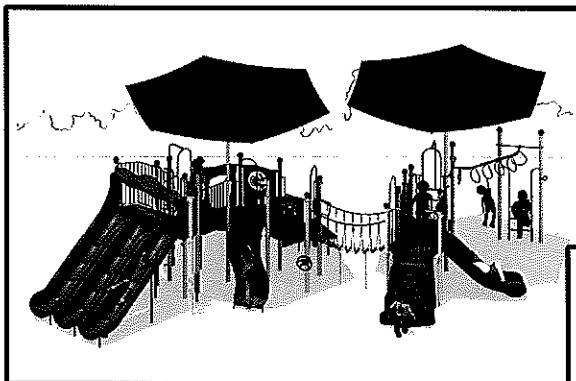
**EDWARDS**  
Engineering Group, Inc

7  
2-20-15



## MANASQUAN PUBLIC SCHOOL DISTRICT

### ELEMENTARY SCHOOL



GARRISON *GA* ARCHITECTS

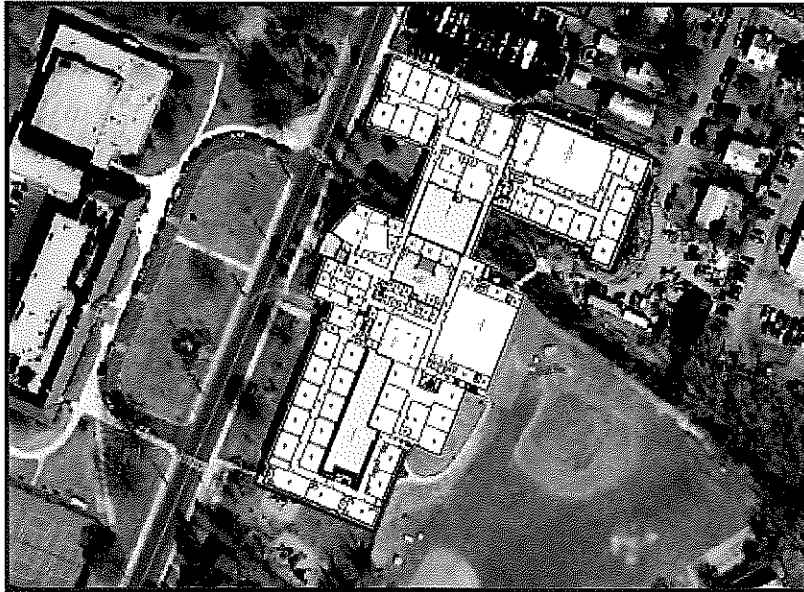
**EDWARDS**  
Engineering Group, Inc

8  
2-20-15



## MANASQUAN PUBLIC SCHOOL DISTRICT

### ELEMENTARY SCHOOL



GARRISON <sup>GA</sup> ARCHITECTS

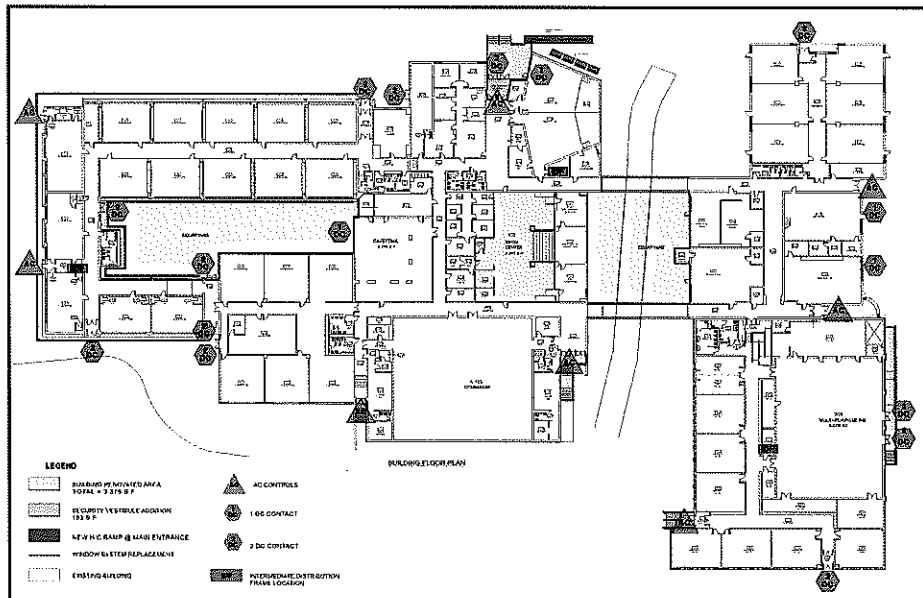
**EDWARDS**  
Engineering Group, Inc

9  
1-27-15



## MANASQUAN PUBLIC SCHOOL DISTRICT

### ELEMENTARY SCHOOL



GARRISON <sup>GA</sup> ARCHITECTS

**EDWARDS**  
Engineering Group, Inc

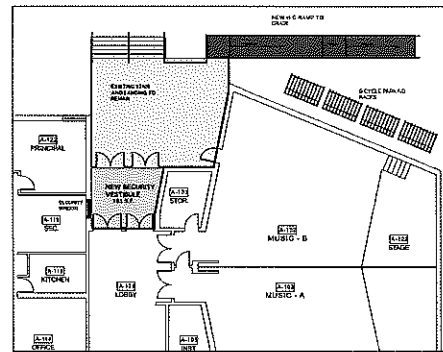
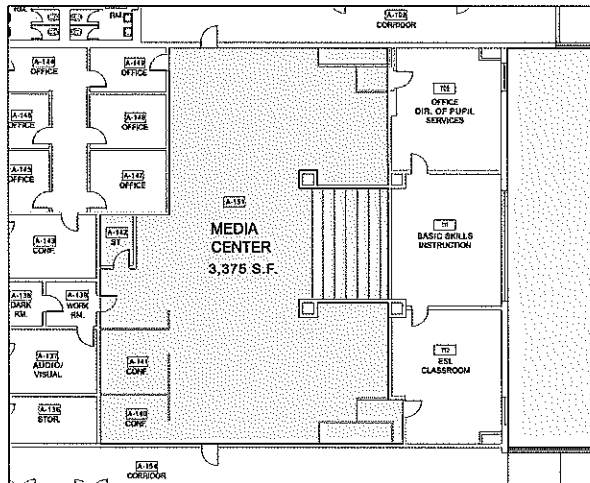
10  
1-27-15





## MANASQUAN PUBLIC SCHOOL DISTRICT

### ELEMENTARY SCHOOL



#### LEGEND

- BUILDING RENOVATED AREA  
TOTAL = 3,375 S.F.
- SECURITY VESTIBULE ADDITION  
183 S.F.
- NEW H/C RAMP @ MAIN ENTRANCE
- WINDOW SYSTEM REPLACEMENT
- EXISTING BUILDING

GARRISON *GA* ARCHITECTS

**EDWARDS**  
Engineering Group, Inc

11  
1-27-15



## MANASQUAN PUBLIC SCHOOL DISTRICT

### HIGH SCHOOL

Site	Qty	Unit Cost	Cost Estimate
Rear Parking Lot Modifications, Lighting, Drainage, etc.			\$190,500
Athletic Stadium Complex Improvements Turf, Running Track, Grandstands (2,000 Seats with Press Box), (2) Tennis Courts, All Field Sports Lighting, New Field House, Turf Baseball Field, Lower Multi-Purpose and Softball Fields			\$8,842,156 **
New Bus Loop Reconfiguration, Front Parking Area			\$352,000
New HC Ramp and Canopy at Main Entrance			\$100,000
		<b>Subtotal</b>	<b>\$9,484,656</b>
		<b>25% Soft Costs (A/E Fees, Contingency, CM, Legal, etc.)</b>	<b>\$2,371,164</b>
		<b>Estimated Total</b>	<b>\$11,855,820</b>
<b>Exterior Renovations</b>			
Replace Slate Roof with GAF "Slate Look" Product	10,996 SF @	\$25	\$274,900
Replace 1998 Section Shingle Mansard Roof with GAF Product	6,813 SF @	\$15	\$102,195
Replace Exterior Double Doors	5 sets @	\$40,000	\$200,000
Door Access and Monitoring on All Exterior Doors			\$90,000
		<b>Subtotal</b>	<b>\$667,095</b>
		<b>25% Soft Costs (A/E Fees, Contingency, CM, Legal, etc.)</b>	<b>\$166,774</b>
		<b>Estimated Total</b>	<b>\$833,869</b>

\*\* Site Scope of Work Partially NOT Eligible for State Aid – Turf, Lighting, Concession, Bleachers, etc.

GARRISON *GA* ARCHITECTS

**EDWARDS**  
Engineering Group, Inc

12  
3-18-15



# MANASQUAN PUBLIC SCHOOL DISTRICT

## HIGH SCHOOL

Interior Renovations	Qty	Unit Cost	Cost Estimate
Renovations to the Lobby Area of the High School to Provide a Security Entry for Visitors			\$75,000
Science Lab Wing Renovations	6,296 SF @	\$300	\$1,888,800
Replace 2-Story Stair Tower, Doors and Hallway Enclosure (3) with New Fire-Rated Material	3 @	\$50,000	\$150,000
Interior Door and Hardware Replacement - (Base Bid = 1931 Corridor Doors) Alternates = 1931 Non-Corridor Doors, 1961 Corridor Doors, 1961 Non-Corridor Doors, 1995 Corridor Doors, 1996 Non-Corridor Doors and Stair Tower Doors)			\$491,000
		Subtotal	\$2,604,800
		25% Soft Costs (A/E Fees, Contingency, CM, Legal, etc.)	\$651,200
		Estimated Total	\$3,256,000

New Construction	Qty	Unit Cost	Cost Estimate
Second Floor Science Lab Addition (3) Labs and Prep (1) IT Office, (1) Greenhouse	7,668 SF @	\$350	\$2,683,800
New Elevator and Stair Tower Addition	668 SF		\$350,000
		Subtotal	\$3,033,800
		25% Soft Costs (A/E Fees, Contingency, CM, Legal, etc.)	\$768,450
		Estimated Total	\$3,792,250

GARRISON <sup>GA</sup> ARCHITECTS

**EDWARDS**  
Engineering Group, Inc

13  
5-4-15



# MANASQUAN PUBLIC SCHOOL DISTRICT

## HIGH SCHOOL

MANASQUAN HS	Total Estimated Cost	Estimated State Share	Local Share
Site Work	\$11,855,820	(\$1,032,306)	\$10,823,514
Exterior Renovations	\$833,869	(\$333,548)	\$500,321
Interior Renovations	\$3,256,000	(\$1,302,400)	\$1,953,600
New Construction	\$3,792,250	(\$471,099)	\$3,321,151
<b>TOTAL</b>	<b>\$19,737,939</b>	<b>(\$3,139,353)</b>	<b>\$16,598,586</b>
		16%	84%

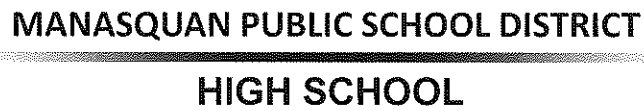
GARRISON <sup>GA</sup> ARCHITECTS

**EDWARDS**  
Engineering Group, Inc

14  
5-4-15



15  
1-27-15

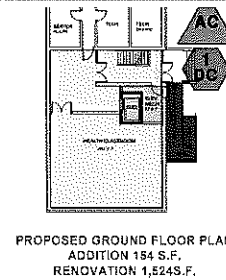
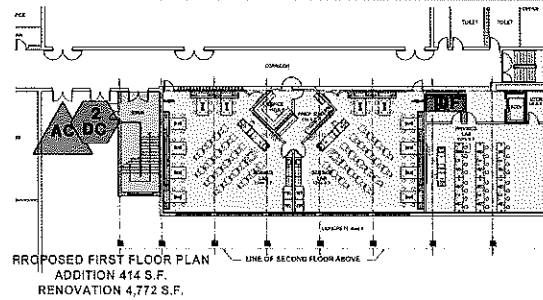
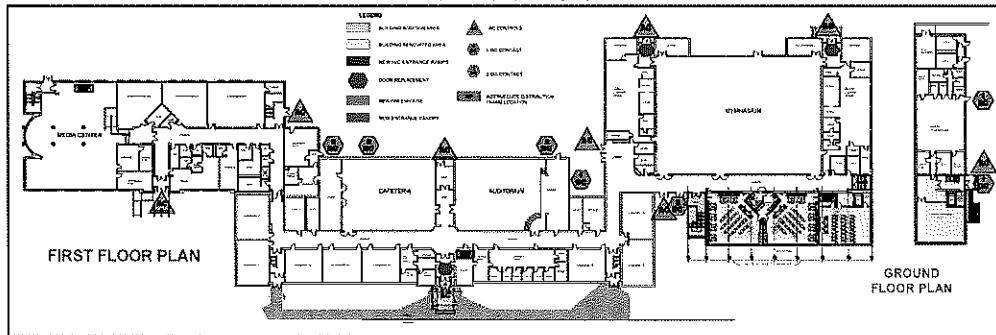


16  
2-20-15



## MANASQUAN PUBLIC SCHOOL DISTRICT

### HIGH SCHOOL



GARRISON *GA* ARCHITECTS

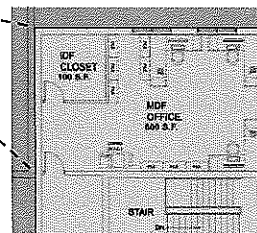
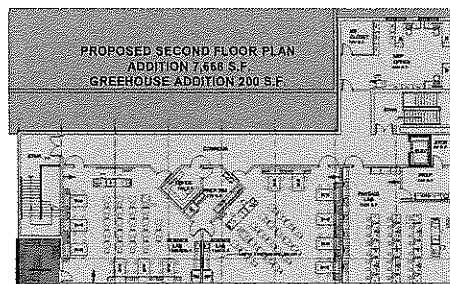
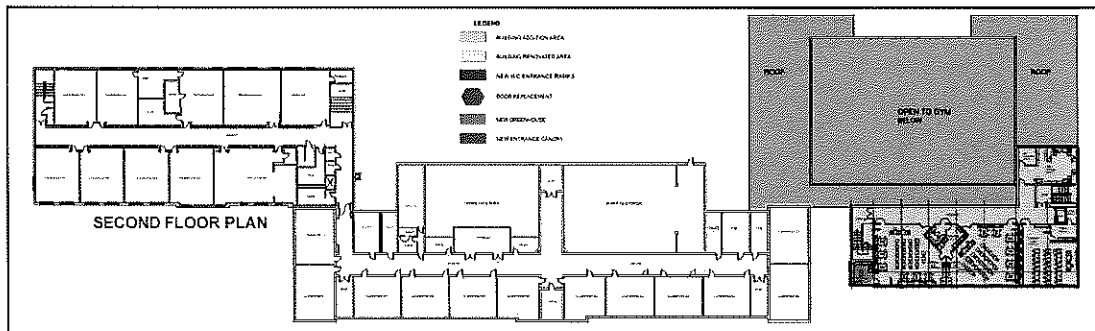
**EDWARDS**  
Engineering Group, Inc

17  
2-20-15



## MANASQUAN PUBLIC SCHOOL DISTRICT

### HIGH SCHOOL



GARRISON *GA* ARCHITECTS

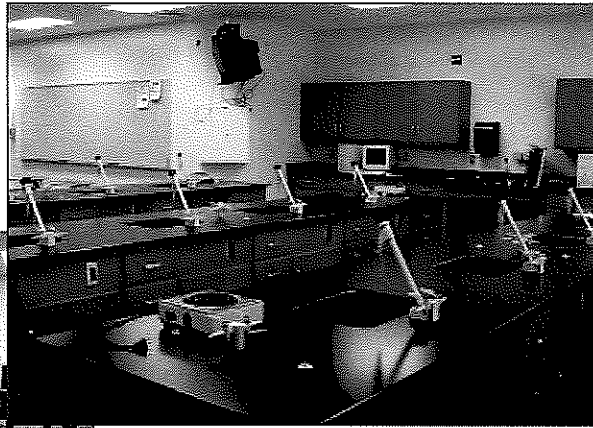
**EDWARDS**  
Engineering Group, Inc

18  
1-27-15



## MANASQUAN PUBLIC SCHOOL DISTRICT

SIMILAR PHOTO OF PROPOSED SCIENCE LAB



SIMILAR PHOTO OF PROPOSED PHYSICS LAB

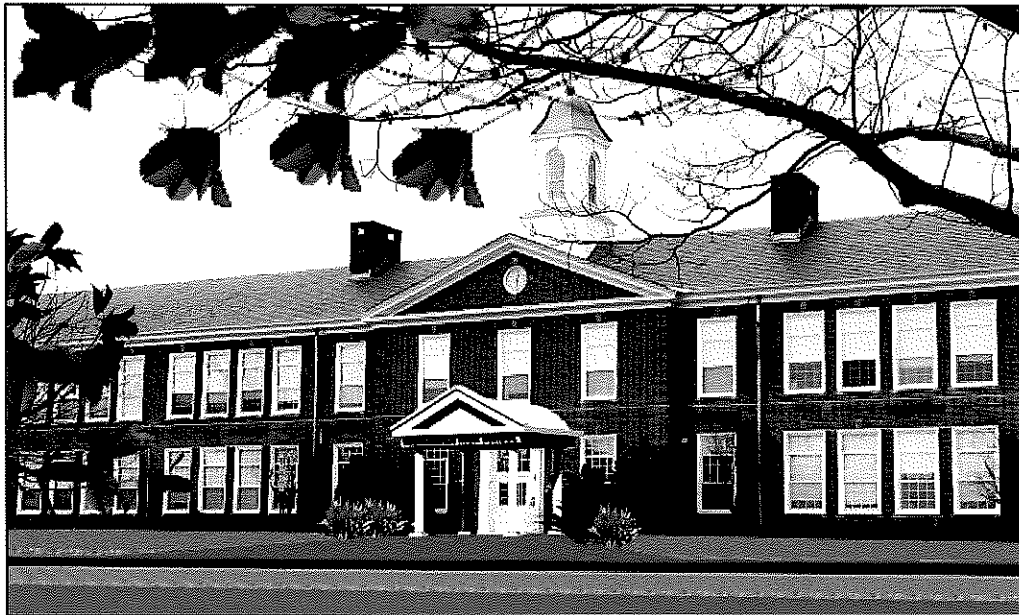
GARRISON <sup>GA</sup> ARCHITECTS

**EDWARDS**  
Engineering Group, Inc

19  
2-12-15



## MANASQUAN PUBLIC SCHOOL DISTRICT



GARRISON <sup>GA</sup> ARCHITECTS

**EDWARDS**  
Engineering Group, Inc

20  
2-20-15



## MANASQUAN PUBLIC SCHOOL DISTRICT

### COST SUMMARY

	Total Estimated Cost	Estimated State Share	Local Share
ELEMENTARY SCHOOL	\$4,743,629	(\$1,792,201)	\$2,951,428
HIGH SCHOOL	\$19,737,939	(\$3,139,353)	\$16,598,586
<b>TOTAL</b>	<b>\$24,481,568</b>	<b>(\$4,931,554)</b>	<b>\$19,550,014</b>
		20%	80%

Tax Impact - \$\_\_\_ per year based on (30) years at 4.15% with \$780,000 available in capital reserves on the average assessed value of \$488,900.

GARRISON <sup>GA</sup> ARCHITECTS

**EDWARDS**  
Engineering Group, Inc

21  
5-4-15



## MANASQUAN PUBLIC SCHOOL DISTRICT

### September 29, 2015 Bond Referendum Schedule

Event	Responsible Party				Minimal Critical Timing	Date
	Architect	School District	Bond Counsel	Other		
Building Program/Scope Update Enrollment Projections Schematic Design Update LRFP	• • • • •	• • • • •			N/A	November 2014 To June 2015
Board Approves Special Election Date		•			60 Days	March 24, 2015
Architect submits to NJ DOE, Revise LRFP	•				N/A	June 2015
NJDOE Issues PEC Offer	•	•	•		N/A	July 2015
NJDOE Issues FEC					N/A	August 2015
Filing of Supplemental Debt Statement				Auditor	60 Days	July 31, 2015
Co-Muni Clerk, Bd of Elect Notice		•			60 Days	July 31, 2015
Planning Board Submission				Engineer	55 Days	August 5, 2015
Publication of Absentee Ballot Notices			•	Clerk	55 days	August 5, 2015
Certified Proposal Statement to County Clerk		•			18 Days	September 11, 2015
Publication and Posting of Notice of Special Election			•	Board of Elections	10 Days	September 19, 2015
Furnishing of Sample Ballots			•	Clerk	8 Days	September 21, 2015
Obtain Certification of Grade Level Instruction			•		1 Day	September 28, 2015
Special Election				Board of Elections		September 29, 2015

GARRISON <sup>GA</sup> ARCHITECTS

**EDWARDS**  
Engineering Group, Inc

22  
3-12-15



**MANASQUAN PUBLIC SCHOOL DISTRICT**  
**HIGH SCHOOL**  
**November 2016 Referendum Projects**

<u>Interior Renovations</u>	Qty	Unit Cost	Cost Estimate
Art Annex Building Renovations	4,770 SF @	\$200	\$954,000
Cafeteria Renovations - Finishes, New Exterior Glass, Ceilings, Lights, etc.	6,000 SF @	\$200	\$1,200,000
Replace all Bathroom Fixtures (Old Section)			\$75,000
Replace Girls' Locker Room Lockers			\$30,000
Renovate Boys' and Girls' Shower Rooms Replacing Shower Valves and Heads, Floor Drains, Epoxy Floor, Install New Ceramic Tile, Provide (11) Plastic Partitions for Girls and (12) for The Boys.			\$75,000
		<b>Subtotal</b>	<b>\$2,334,000</b>
		<b>25% Soft Costs (A/E Fees, Contingency, CM, Legal, etc.)</b>	<b>\$583,500</b>
		<b>Estimated Total</b>	<b>\$2,917,500</b>

GARRISON <sup>GA</sup> ARCHITECTS

**EDWARDS**  
Engineering Group, Inc

23  
5-4-15



**MANASQUAN PUBLIC SCHOOL DISTRICT**  
**HIGH SCHOOL**  
**November 2016 Referendum Projects**

<u>Building Systems</u>	Qty	Unit Cost	Cost Estimate
<b>HVAC Construction</b>			
Replace Existing Pneumatic Temperature Controls and HVAC Equipment for 1961 Science, Music and Gym Wing with New Automatic Temperature Controls			\$1,500,000
Replace Existing Pneumatic Temperature Controls and HVAC Equipment for Main (original) Building and 1995 Addition with New Automatic Temperature Controls			\$4,125,000
Replace Locker Room Exhaust Fans	4 @	\$1,000	\$4,000
Add Air Conditioning to the Existing Gym	2 @	\$125,000	\$250,000
		<b>Subtotal</b>	<b>\$5,879,000</b>
		<b>25% Soft Costs (A/E Fees, Contingency, CM, Legal, etc.)</b>	<b>\$1,469,750</b>
		<b>Estimated Total</b>	<b>\$7,348,750</b>
<b>Electrical Construction</b>			
Replace Existing Fire Alarm System in Old Sections with Addressable Fire Alarm System	160,000 SF @	\$6.00	\$960,000
Replace Electrical Panel Boxes	6 @	\$15,000	\$90,000
Replace Existing Corridor Lighting with LED Lighting	10,000 SF @	\$15.00	\$150,000
Replace Electrical Service and Install Heat in Grounds Garage			\$50,000
VoIP Phone System includes New POE Ports	160,000 SF @	\$1.00	\$160,000
		<b>Subtotal</b>	<b>\$1,410,000</b>
		<b>25% Soft Costs (A/E Fees, Contingency, CM, Legal, etc.)</b>	<b>\$362,500</b>
		<b>Estimated Total</b>	<b>\$1,762,500</b>

GARRISON <sup>GA</sup> ARCHITECTS

**EDWARDS**  
Engineering Group, Inc

24  
5-4-15



**MANASQUAN PUBLIC SCHOOL DISTRICT**  
**HIGH SCHOOL**

<b>MANASQUAN HS 2016 Bond Referendum</b>	<b>Total Estimated Cost</b>	<b>Estimated State Share</b>	<b>Local Share</b>
Interior Renovations	\$2,917,500	(\$1,167,000)	\$1,750,500
HVAC Construction	\$7,348,750	(\$2,939,500)	\$4,409,250
Electrical Construction	\$1,762,500	(\$705,000)	\$1,057,500
<b>TOTAL</b>	<b>\$12,028,750</b>	<b>(\$4,811,500)</b>	<b>\$7,217,250</b>
		<b>40%</b>	<b>60%</b>

GARRISON <sup>GA</sup> ARCHITECTS

**EDWARDS**  
Engineering Group, Inc

25  
5-4-15



MAY 26, 2015

**ELEMENTARY SCHOOL PERSONNEL**

THE CHIEF SCHOOL ADMINISTRATOR RECOMMENDS THE FOLLOWING  
ELEMENTARY SCHOOL PERSONNEL TO THE BOARD OF EDUCATION:

**Recommend** approval of the following **teachers** for the **2015 Summer Skills Program** at **\$900.00 each**:

**Alyse Leybovich**

**Kali Mura**

**Jessica Woytowicz**

**Recommend** approval of longevity from \$1,000 to \$2,000 for **Margaret Polak** for the 2015-2016 SY:  
(Contractual) – *previously approved on April 28, 2015.*

**Recommend** approval of the appointment of **Jillian Berra**, TLR.ES.LTRT.03.07, Elementary School Special Education Teacher, (*long term replacement - 4321*), beginning on or about September 2, 2015 through on or about February 1, 2016 at Step 2B, \$48,110.00, pro-rated – *final salary to be determined when contract negotiations are finalized.*

**Recommend** approval of the request of an unpaid Family Medical Leave of Absence extension for **NRS.ES.NURS.FL.02** (4091) to approximately August 1, 2015. (*Previously approved to return approximately May 30, 2015*)

**Recommend** approval of the extension of **Gina Melillo**, TLR.ES.LTRT.01.10, as an Elementary School Nurse (*long term replacement-4091*) through on or about June 30, 2015 at Step 1B \$47,610.00, pro-rated. (*Previously approved extension on April 28, 2015*)

**Recommend** approval of the extension of **Elizabeth Walling**, TLR.ES.LTRT.FL.02, Elementary School Special Education Teacher, (*long term replacement-4326*), through on or about June 30, 2015 at Step 1B \$47,610.00, pro-rated. (*Previously approved on August 26, 2014*)

**Recommend** approval to rescind the following paraprofessional staff approved as tenure teachers on April 28, 2015 for the 2015-2016 SY:

<b><u>Gina Mellilo</u></b>	-	<b><u>PARA.ES.AIDE.NA.18</u></b>
<b><u>Elizabeth Walling</u></b>	-	<b><u>TLR.ES.LTRT.02.01</u></b>

**Recommend** approval for **Heather Saake** to provide behavioral support to a student on an as needed basis for the 2014-2015 SY @ \$40.00 per hour, not to exceed 6 hours per week.

**EXTENDED SCHOOL YEAR PROGRAMS- 2015**

<b><u>STUDENT</u></b>	<b><u>PLACEMENT</u></b>	<b><u>DATES</u></b>	<b><u>TUITION</u></b>	<b><u>HOURS</u></b>
<b><u>MANASQUAN/OOD</u></b>				
#2444	Alpha School 1:1 Aide	7/6 - 8/14/15 (Mon to Frid)	\$8,803.86	8:45 am to 2:30 pm (early dismiss. 1:00 pm 1 <sup>st</sup> & last day)
	6 wks, Home Programming: \$40.00 per hr., 6 hrs. per week, not to exceed \$1,440.00 1 hr. BCBA per wk, 4 hrs. month @ \$125.00 not to exceed \$750.00 Speech 2 x 30 minutes group, 1 x 30 minutes individ. PT 1 x 30 minutes per week individ., 1 x 30 minutes group OT 2 x 30 minutes per week individ			
#17272	Woods (Residential placement) 1:1 Aide			
	Speech 2 x 15 minutes per week individual, 1 x 30 min group OT 2 x 30 minutes per week individ. PT 2 x 30 minutes per week Adaptive PE: 1 x 45 min.			
#16256	Children's Center	7/01-8/25/15	\$11,047.14	9:00am-2:00pm (Closed 7/3)
#181434	Bonnie Brae Counseling	7/7-8/7/15	\$	9:00am-3:00pm (Residential plcmt.)
#1938	Lewis School (a.m. program)	6/23-7/18/15 (Mon.-Frid.)	\$2,600.00	8:30am-12:00pm (Closed 7/3)
#1961	Hampton Academy	7/6-7/24/15 (Mon.-Frid.)	\$1,800.00	9:00am – 12:00pm (No Transportation)
#2285	Collier Middle School	7/6-8/14/15	\$8,911.80	9:00am-2:30pm
#252126	Rugby School	7/6-8/14/15	\$	8:45am-2:15pm
#1715	½ day FRA, ½ day Lifework			
#282564	Shrewsbury Public School Speech 2 x 25 min. OT 2 x 25 min.	7/6-8/6/15	\$	8:30am-12:30pm
#191390	Harbor School	7/6-8/14/15	\$8,208.29	8:45am-2:30pm (1:00 dismissal on 7/6 & 8/14)

**MANASQUAN /In-District**

#2075	Instructional Support, 3 x per week (90 min.), for 4 weeks Speech-1 x 30 min. individ.			(No Transportation)
-------	--	--	--	---------------------

**AVON**

#152076	Children's Center	7/1-8/25/15	\$11,074.14	9:00am-2:00pm (Closed 7/3)
#182560				
#161502	Wall @ Intermediate School	7/6-- 7/30/15	\$	8:30am-12:30pm (Mon-Thurs)

**SEA GIRT**

#181453	Bridge Academy (Tutoring session (Mon – Thurs) (20, 1 hour sessions)	6/29-7/30/15 6/29-7/30/15	\$2,500.00 \$1,200.00	8:00am-12:30pm (Closed 7/3) 1:00pm-2:00pm
#182296	Wall @ Intermediate School	7/6-7/30/15	\$	8:30am-12:30pm (Mon-Thurs)
#161488	Manasquan Rec. (Socializing Group)	7/6-7/24/15	\$350.00	9:00am-12:00 noon (Mon-Friday)

**BRIELLE**

#16605	Southern Regional H.S.	7/6 -8/14/15	\$8,900.00	8:00am-1:00pm (Mon-Thurs) On Friday-8-12pm)
#16604	Lehmann School (*plus Aide) Plus an air conditioned bus PT-1 x 60 minutes per week, at home	7/6-8/26/15	\$12,616.00	9:00am-2:30pm
#16607	Hawkswood School (1:1 Aide)	7/6-8/14/15	\$10,212.00 \$5,100.00	8:30am-2:00pm
#181394	Pt. Pleasant Boro HS (w/OT, Speech, PT Svcs. and 1:1 Aide)	7/1-8/12/15	\$	7:45am-11:45am (Closed 7/3) (Parent is transporting 2015)
#161547	Jackson (Elms E.S.)	7/6 – 8/13/15	\$1,434.00	8:00am – 12:00pm (Mon-Thurs)
#182556	Red Bank Reg. H.S.	7/6-7/30/15	\$	8:00am-1:00pm (Mon-Thurs)
#182384	Remediation/Maintenance (Reading, Writing, & Math)	90 min, 3 x week for 4 weeks		
#181393	DDDC, Rutgers Univ.	6/22-8/7/15	\$	9:15am-2:45pm (7/3 Closed, early closing 7/24)

**SPRING LAKE**

#182562	Search Day	7/1-8/21/15	\$11,465.93	8:45am-2:45pm (Closed 7/3)
#182558	Search Day	7/1-8/21/15	\$11,465.93	8:45am-2:45pm (Closed 7/3)
#172192	Deron	7/1-8/12/15 (Mon-Frid.)	\$8,756.40	8:30am-1:30pm (Closed 7/3)

**BELMAR**

#191391	Eden, Princeton	7/6-8/21/15	\$	9:00-5:00pm (no transportation needed from 7/6 to 8/8/15) (from 8/10/15 to 8/21/15 needs to be transported, bus + Aide) (9 to 5 pm Mon. to Thurs. – 9 to 2:30 pm on Friday's)
#151234	Wall @ Intermediate School	7/6-7/30/15	\$	8:30am-12:30pm (Mon. to Thursday)
#191389	Harbor School	7/6 – 8/14/15	\$8,208.29	8:45 am-2:30pm (1:00 pm dismissal 7/6 & 8/14)
#172003	Lehmann School	7/6-8/26/15 (Mon-Frid.)	\$12,616.00	9:00am-2:30pm
#132074	JET/Collier H.S.	7/6-8/14/15	\$8,911.80	9:00am-2:00pm

**SPRING LAKE HEIGHTS**

#182555	JET/Collier High School	7/6-8/14/15	\$8,911.80	9:00am-2:30pm
#182275	Shepard School	7/1 – 8/12/15 (Closed 7/3)	\$	8:30am-2:00pm (Mon., Tues, Wed.) 8:30am-3:30pm (Thurs.) 8:30am-12:30pm (Frid.)
#13616	Willowglenn Academy	7/8 - 7/31/15 8/3-8/21/15	\$8,183.40	8:20am-12:20pm (Tues-Frid for July) (Mon-Frid for August) (Needs transportation)
#161803	Harbor School	7/6 – 8/14/15	\$8,208.29	8:45am-2:30pm (1:00 pm dismissal 7/6 & 8/14)

**LAKE COMO**

#151271	JET/Collier	7/6-8/14/15	\$8,911.80	9:00am-2:30pm
#151260	Wall @ Intermediate School	7/6-7/30/15	\$	8:30am-12:30 pm (Mon-Thurs.)

---

(Revised 05/13/2015)



# MEMO from the Office of the Principal

---

**To:** Dr. Frank Kaysan, Superintendent  
**From:** Rick Coppola, Principal  
**Date:** May 5, 2015  
**Re:** Final Exams – Seniors and Underclassmen Spring 2015

**CONFLICT PERIOD – WEDNESDAY, JUNE 17 – 12:15 – 2:15 (Room 002)**

## SENIORS

THURSDAY, JUNE 18	FRIDAY, JUNE 19
7:38 am – 9:38 am	7:38 am – 9:38 am
<b>Block 1 Exam in the Auditorium</b>	<b>Block 2 Exam in the Auditorium</b>
9:53 am – 11:53 pm	9:53 am – 11:53 pm
<b>Blocks 3 &amp; 4 Exams in the Auditorium</b>	<b>Block 5 Exam in the Auditorium</b>

## UNDERCLASSMEN

**12:05 pm – Early Dismissal for underclassmen on June 22 and June 23**

MONDAY, JUNE 22	TUESDAY, JUNE 23
7:38 am – 9:38 am	7:38 am – 9:38 am
<b>Block 1 Exam</b>	<b>Block 2 Exam</b>
9:53 am – 11:53 pm	9:53 am – 11:53 pm
<b>Block 3 Exam</b>	<b>Block 5 Exam</b>
12:08 pm – 2:08 pm	
<b>Block 4 Exam</b>	

Buses for underclassmen will pick up at the normal time in the morning. Buses for underclassmen will depart at 12:05 on Thursday, June 18<sup>th</sup>, Friday, June 19<sup>th</sup> and Tuesday, June 23<sup>rd</sup>. NOTE: Monday, June 22<sup>nd</sup> buses will depart at 2:10 p.m.

MAY 26, 2015

**HIGH SCHOOL PERSONNEL**

THE CHIEF SCHOOL ADMINISTRATOR RECOMMENDS THE FOLLOWING HIGH SCHOOL/DISTRICT PERSONNEL TO THE BOARD OF EDUCATION:

**Recommend** the approval of the appointment of Allyson Griffith, TCH.HS.WLAN.FL04, as a **High School World Language Teacher** for the **2015-2016 SY** at **Step 7M**, retirement replacement (4046) – *final salary to be determined when contract negotiations are finalized.*

**Recommend** approval of the following coaches to chaperone the Manasquan High School Surf Team at the NSSA Interscholastic National Championships, previously approved April 28, 2015, for the **revised dates of June 10-June 16, 2015 (6 nights)** at a stipend of \$225.00 each per night:

**Kristen Buss**

**Joseph LaCarrubba**

**Recommend** approval of Lisa Crowning, for Biology Remediation for Block 3 at a stipend of \$57.00 per Block, from May 5, 2015 through May 22, 2015 (14 days).

**Recommend** approval of Eric Wasnesky for Biology Remediation for Block 4 at a stipend of \$57.00 per Block, from May 5, 2015 through May 22, 2015 (14 days).

**Recommend** approval of Ryan Basaman for Study Hall, Block 3A at a stipend of \$28.50 per Block, coverage associated with Block 3 Biology Remediation, from May 5, 2015 through May 22, 2015 (14 days).

**Recommend** approval to adjust the longevity stipend, previously approved on April 28, 2015, for Sean McCarthy for the 2015-2016 SY from \$1,000.00 to \$2,000.00.

**Recommend** approval for **TCH.HS.ENGL.FL.08** (4435) to take a paid medical leave of absence beginning on or about September 8, 2015 through November 2, 2015, and an unpaid Family Medical Leave of Absence beginning November 3, 2015 through February 26, 2016 and returning on February 29, 2016.

**Recommend** approval for **TCH.HS.SCNC.FL.06** (4463) to take a paid medical leave of absence beginning on or about June 15, 2015 through September 18, 2015, an unpaid Family Medical Leave of Absence beginning September 21, 2015 through April 6, 2016 and Child Care Leave of Absence beginning April 7, 2016 through May 13, 2016, returning on May 16, 2016.

**Recommend** approval of the resignation of Patricia McKenzie, TCH.HS.BUSN.FL.03, High School Business Teacher, for the purpose of retirement, effective September 1, 2015.

May 26, 2015

## DOCUMENT 2

**Recommend** approval of the following teachers to chaperone the Junior Prom, May 22, 2015 at a stipend of \$28.50/hour for 5 hours each:

**Gretchen Boody**  
**Kurt Fenchel**  
**Alicia Narucki**

**Leigh Busco**  
**Dave Hallion**  
**Matthew Voskian**

**Toni Capodanno**  
**Kevin Hyland**

**Lisa Crowning**  
**Brian Lee**

**Recommend** approval of the following teachers to chaperone the Senior Prom, May 29, 2015 at a stipend of \$28.50/hour for 5 hours each:

**Ryan Basaman**  
**Kevin Hyland**

**Lisa Crowning**  
**Meredith Morris**

**Kurt Fenchel**  
**Jennifer Mura**

**Dave Hallion**  
**Matthew Voskian**

**Recommend** approval to hire the following as additional staff members for computer maintenance beginning July 1, 2015 through September 7, 2015, 28 hours per week, \$10.00 per hour:

**Dylan Caci**  
**Timothy Krajewski** (*pending criminal history approval*)  
**Andrew Ware** (*pending criminal history approval*)